



PBSS3

Industry Standards

UL 508, Types 4, 4X, 12 & 13
CSA Certified, Type 4, 4X & 12
NEMA/EEMAC Type 4, 4X, 12 & 13

UL File E64791

CSA File LL66078

FEATURES-SPECIFICATIONS
Applications

Designed to hold all standard brands of pushbuttons, switches and pilot lights. Provide protection from dust, dirt, oil and water. PBSS Series designed for areas where serious corrosion problems exist.

Construction

- Bodies and doors fabricated from 14 gauge 304 or 316L stainless steel
- Continuously welded seams ground smooth
- Closed cell oil resistant neoprene gasket

- External mounting plates, top and bottom of enclosure
- Captivated cover screws thread into sealed wells
- Standard "4-way" pushbutton holes accept all brands of oil-tight push buttons, switches and pilot lights
- Enclosures 9.50" x 6.25" x 3.00" and larger have internal detachable hinges to hold cover open during wiring, yet permit quick removal
- Grounding provisions provided

Finish

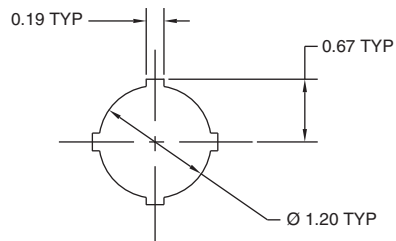
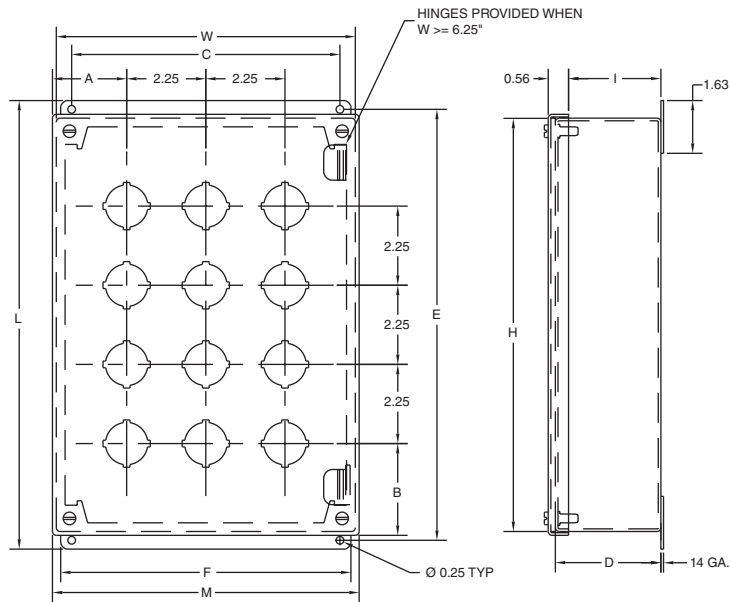
- Cover and outside of enclosure have a smooth grained finish

Accessories

- See pages H16-H27 for Painted Gray PB Series
- See page J4 for hole seals

PBSS SERIES (30.5MM) PUSHBUTTON ENCLOSURES									
CATALOG NUMBER		BODY/DOOR STEEL GAUGE	ENCLOSURE SIZE H X W X D	MOUNTING C X E	OVERALL L X M	F	I	A	B
304 SS	316L SS								
PBSS1	PBSS1A	14/14	3.50x3.25x2.81 (89x83x71)	2.38x4.00 (60x102)	4.50x3.56 (114x90)	3.00 (76)	2.41 (61)	1.78 (45)	1.88 (48)
PBSS2	PBSS2A	14/14	5.75x3.25x2.81 (146x83x71)	2.38x6.25 (60x159)	6.75x3.56 (171x90)	3.00 (76)	2.41 (61)	1.78 (45)	1.88 (48)
PBSS3	PBSS3A	14/14	8.00x3.25x2.81 (203x83x71)	2.38x8.50 (60x216)	9.00x3.56 (229x90)	3.00 (76)	2.41 (61)	1.78 (45)	1.88 (48)
PBSS4	PBSS4A	14/14	10.25x3.25x2.81 (260x83x71)	2.38x10.75 (60x273)	11.25x3.56 (286x90)	3.00 (76)	2.41 (61)	1.78 (45)	1.88 (48)
PBSS6	PBSS6A	14/14	9.50x6.25x3.09 (241x159x79)	5.38x10.00 (137x254)	10.50x6.56 (267x167)	6.00 (152)	2.69 (68)	2.16 (55)	2.63 (67)
PBSS9	PBSS9A	14/14	9.50x8.50x3.09 (241x216x79)	7.63x10.00 (194x254)	10.50x8.81 (267x224)	8.25 (210)	2.69 (68)	2.16 (55)	2.63 (67)
PBSS12	PBSS12A	14/14	11.75x8.50x3.09 (298x216x79)	7.63x12.25 (194x311)	12.75x8.81 (324x224)	8.25 (210)	2.69 (68)	2.16 (55)	2.63 (67)

**PBSS SERIES ENCLOSURES
NEMA 12, 4 & 4X (30.5MM) PUSHBUTTON WALL-MOUNT**



Standard 4-Way Pushbutton

Hole Arrangements

